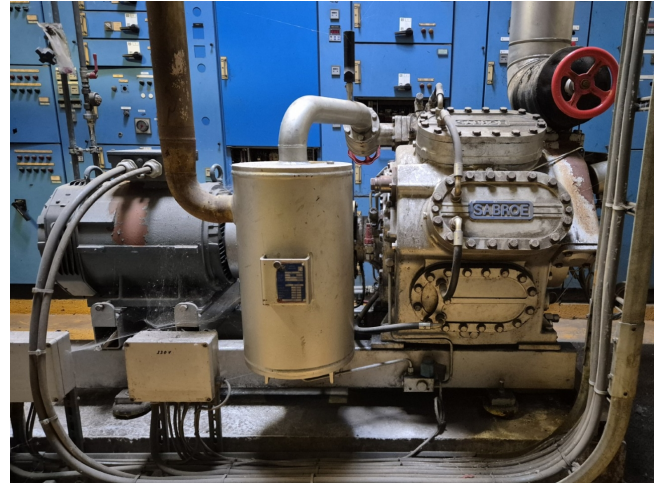


Sabroe SMC 108 L

Specifications

| | |
|---------------------------|---|
| Marque | Sabroe |
| Le type | SMC 108 L |
| Réfrigérant | NH 3 (ammonia) |
| kW at +10°C/+40°C | 722,4* |
| kW at 0°C/+40°C | 477,8* |
| kW at -5°C/+40°C | 380,2* |
| kW at -10°C/+40°C | 297,1* |
| Électromoteur Specs | 50/60 Hz - 37/42,5 kW - 1460/1760 RPM |
| Démarrage à vide | ✓ |
| Contrôle de capacité | ✓ |
| Sur le châssis en acier | ✓ |
| Interrupteurs de sécurité | ✓ |
| de pression | |
| Manomètres | ✓ |
| Séparateur d'huile | ✓ |
| Voyant | ✓ |
| m ³ / h | 565 |
| Remarques | Y.o.b. 2001 |
| Remarques | *Capacity based on a bigger electric motor |
| Stock | 1 |



Description

Used Sabroe SMC 108 L

Used Sabroe SMC 108 L reciprocating compressor on R717 (Ammonia). Complete with a Schorch KN7200M-BB01B-401 electric motor - 50/60 Hz - 37/42,5 kW - 1460/1760 RPM, oil separator, pressure and safety switches/gauges. The compressor has a displacement of 565 m³/h. *Capacity based on a bigger electric motor.

*Why choose for HOSBV? Were not only the largest used refrigeration specialist in Europe, but also, we deliver all equipment including an extensive test, warranty and industrial cleaning.

*Optional we can also perform a new paint job and arrange the logistics.

